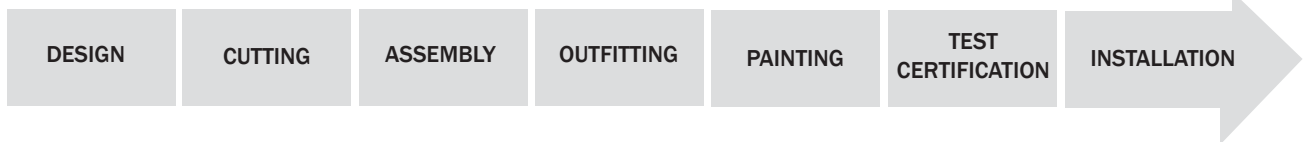




SEOHAE MARINE ENGINEERING

**HATCH COVER, LASHING BRIDGE, RO-RO EQUIPMENT, HYDRO-DOOR
TURNKEY SOLUTION FROM DESIGN TO INSTALLATION**

■ SEOHAE PRODUCT AS A COMPLETE SET



We have delivered high-tech solutions for cargo access & handling systems, mainly hatch cover systems, ro-ro equipment, lashing bridges and hydraulically operated doors to over 500 ships throughout the world with our well-recognised expertise and experience since the company has been founded in 1993.

We also provide comprehensive technical services to customers from the initial and concept design stage through our technical consulting, Design divisions and our well experienced staff will assist you in developing the most cost-saving designs and solutions.

We produce most of vital parts and spare parts at our workshop in order to provide a prompt service for the needs for our customers.

Practical experience in steel block fabrication and cargo handling systems assures us that we are getting the most comprehensive and advanced production system available. With our 2nd factory in Mokpo, we offer customer our systems from design to installation as a turnkey solution.



■ LASHING BRIDGE SYSTEM



■ HATCH COVER SYSTEM



■ HYDRO. DOOR SYSTEM



■ EXTERNAL RAMP SYSTEM



■ INTERNAL RAMP SYSTEM



■ CAR DECK SYSTEM

SEOHAE 2ND FACTORY INTRODUCTION

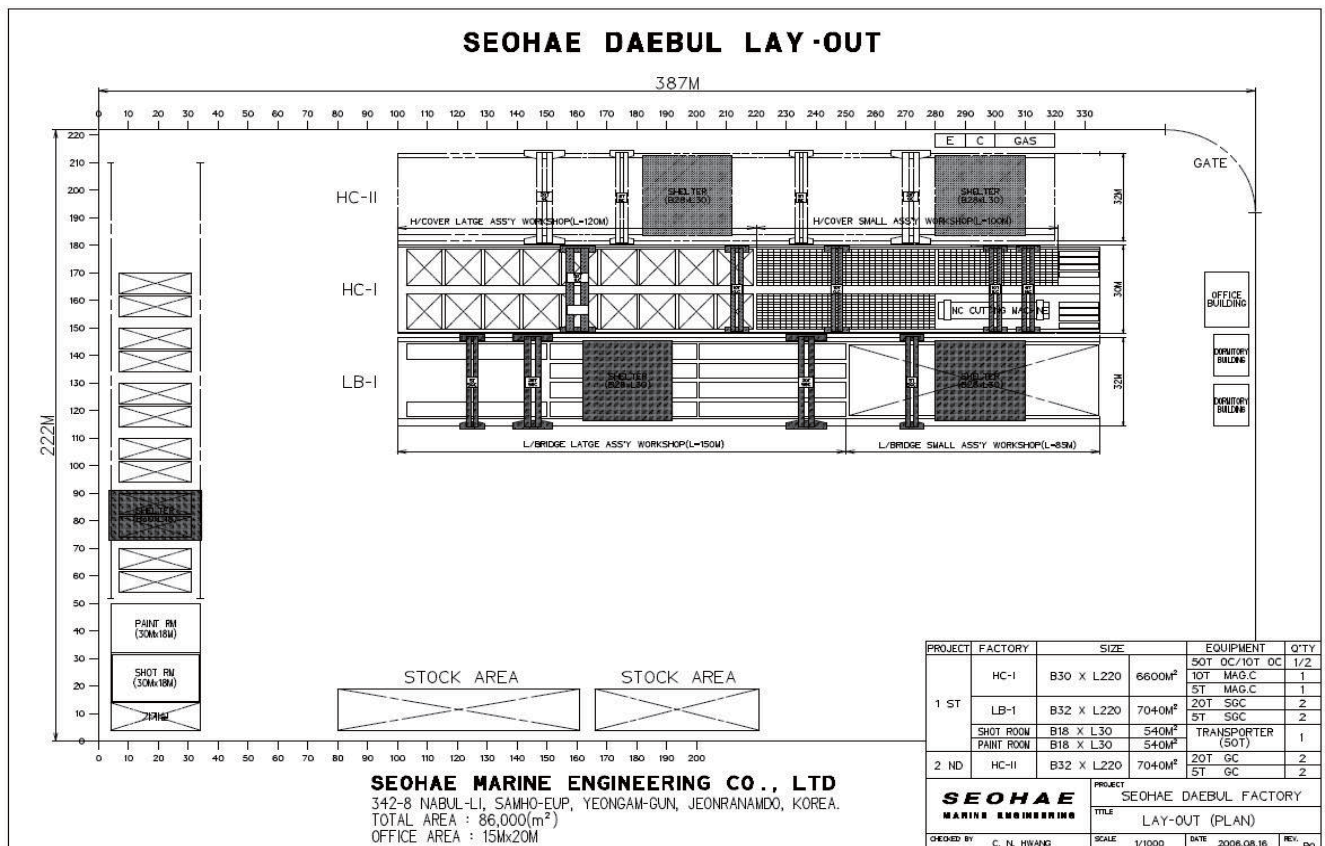
With the rising demand for a complete set, SEOHAE has started to construct our 2nd factory in Mokpo, the southwest of Korea. It is located in Daebul Industry Complex and is near Mokpo port, surrounding shipyards.

This enables for customer to eliminate the additional costs, liability issues, and time delays associated with multiple vendors accomplishing various portions of the complete task. Also we provide a uniform quality for all process and guarantee them with a concret access.

This factory which will be officially opened in April, 2007, increases our production capacity up to 30,000 Tons a year with our existing factory in Kimhae near Busan. By such capacity and facilities, we can offer customers the better quality and better price.

SEOHAE MARINE ENGINEERING Co., Ltd
Address : 342-8, Nabul-Li, Samho-Eup, Yeongam-Gun, Jeonramando, Korea

Total Site Area : 86,000 (m²)
Office Building Area : 15 m x 20 m x 2
Fabrication Workshop Area : 30 m x 150 m x 2 lines
Paint & Shot Workshop Area : 30 m x 150m
Facility : Crane, NC cutting machine, auto welding, transportor, etc



■ NEW FACTORY IS TO GO INTO OPERATION IN MAY OF 2007

New production facility (total site area : 86,000 m²) with the capacity to produce for all Seohae system is soon open and well ahead of schedule. The new factory, located in Mokpo Daebul industrial complex, has equipped with the latest hi-tech tooling and production system which enables them to maintain control of quality, production costs, and delivery schedule and is staffed by local skill labor trained and supervised from Seohae's top engineers. Moreover, our present production in Kimhae will be moved and added to Mokpo factory by June of 2007.

Opening Seohae factory in Mokpo reflects Seohae's strategic decision to meet the coming needs of customers in the world. New factory is closer to all major shipyards in the southwest of Korea. This will allow us to make cost savings and deliver our production more efficiently to shipyards.

Our new factory in Mokpo not only gives us a solid and highly competitive local presence, but also means we can service our customers with the advanced system.



■ MAIN WORK SHOP



■ PAINT SHOP



■ OFFICE BUILDING



■ WORKMAN HOUSE